

# Shark<sup>®</sup>

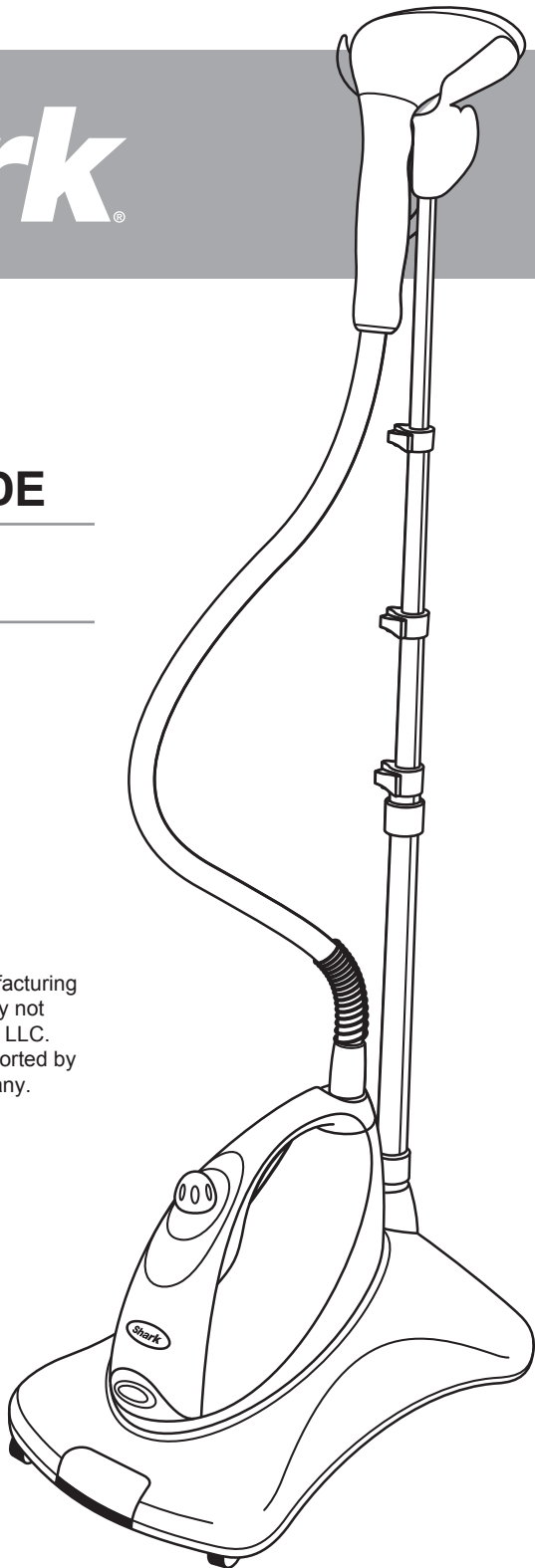
## OWNER'S GUIDE

---

# R-GS300

---

Refurbished by America's Remanufacturing Company, an independent company not affiliated with SharkNinja Operating LLC. This product is warranted and supported by America's Remanufacturing Company.



# IMPORTANT SAFETY INSTRUCTIONS

## For Household Use Only

**WHEN USING YOUR SHARK® GARMENT STEAMER, BASIC SAFETY PRECAUTIONS SHOULD ALWAYS BE FOLLOWED, INCLUDING THE FOLLOWING:**

**READ ALL INSTRUCTIONS BEFORE USING YOUR GARMENT STEAMER.**



**DANGER OF SCALDING**

Please use caution when using the garment steamer. The steam emitted from the openings is very hot.

**POLARIZED PLUG:**

To reduce the risk of electric shock, this appliance has a polarized plug (one blade is wider than the other). As a safety feature, this plug will fit into a polarized outlet only one way. If the plug does not fit fully into the outlet, reverse the plug. If it still does not fit, contact a qualified electrician. Do not attempt to defeat this safety feature. Do not change the plug in any way.

1. **USE THE SYSTEM ONLY FOR ITS INTENDED USE AS DESCRIBED IN THIS MANUAL.**

2. **ONLY USE WATER.** To extend the life of your 3 in 1 Fabric Steamer, we recommend using distilled water especially if you live in an area with hard tap water.

3. **DO NOT** add cleaning solutions, scented perfumes, oils, or any other chemicals to the water used in this appliance as this may damage the unit or make it unsafe for use.

4. Use of any substances other than manufacturer's recommended accessories will automatically void your warranty.

5. **DO NOT** use outdoors.

6. **DO NOT** leave the appliance unattended when plugged in.

7. Always unplug the power cord from the electrical outlet when not in use, when filling the water tank and before cleaning.

8. **DO NOT** allow to be used as a toy.

9. **DO NOT** put any objects into openings or operate with any opening blocked.

10. **DO NOT** use on leather, suede, vinyl, plastic or other delicate steam sensitive materials. Always determine the colorfastness of any fabric before using the fabric steamer by testing it on a small portion of the garment's underside.

11. This appliance and the accessories become hot during use. Exercise care when changing accessories and follow removal and changing instructions as outlined in the manual. Do not change frames while the unit is turned on. Turn the unit off, wait for the unit to cool, and then change frames.
12. The garment steamer can be used in a vertical or horizontal motion. **NEVER** hold the steam head down while at rest or tilt it in a backward position as this may result in discharge.
13. When cleaning the garment steamer, unplug the power cord and clean with a dry or damp cloth. **DO NOT** pour water on the unit or use alcohol, benzene or paint thinner on the unit.
14. **NEVER** attempt to steam clothing while it is being worn.
15. To protect against a risk of fire, electric shock, or injury:
  - a. To avoid circuit overload, **DO NOT** operate another appliance on the same socket (circuit) as the fabric steamer.
  - b. **DO NOT** immerse any part of the system in water or other liquids.
  - c. **DO NOT** pull power cord to disconnect from outlet; instead, grasp plug and pull to disconnect.
  - d. **DO NOT** use extension cords or outlets with inadequate current carrying capacity. If an extension cord is absolutely necessary, use a 15-ampere cord. Cords rated for less amperage may overheat. Use care to arrange the cord so that it cannot be pulled or tripped over.
  - e. **DO NOT** operate the system with a damaged cord or plug, or if the appliance or any other part of the system has been dropped or damaged.
  - f. **DO NOT** disassemble or attempt to repair the fabric steamer. Incorrect reassembly or repair can cause a risk of electrical shock or injury to persons when the fabric steamer is used.



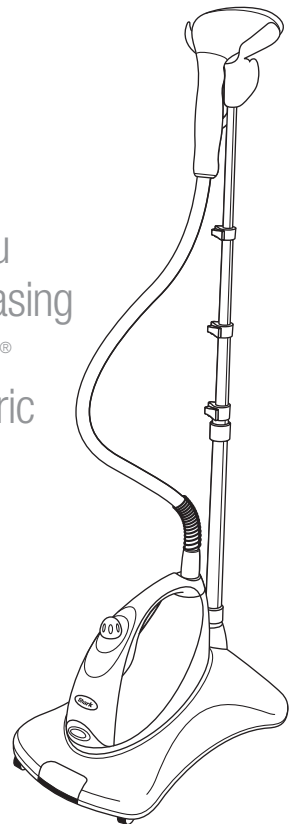
- g. **DO NOT** handle plug or fabric steamer with wet hands or operate without shoes.
- h. **DO NOT** pull or carry by power cord, use power cord as a handle, close a door on the power cord, or pull the power cord around sharp corners or edges.
- i. **DO NOT** allow power cord to touch hot surfaces.
- j. **ALWAYS** disconnect system from electrical outlet when filling the water tank or emptying and when not in use.
- k. **NEVER** aim or direct steam towards people, animals, or plants. The steam is very hot and can cause burns. Burns can occur from touching hot metal parts, steam, steam bonnets or frames.
- l. **DO NOT** operate the product while under the influence of drugs, alcohol or medications.
- m. **DO NOT** operate in the presence of explosive and/or flammable fumes.
- n. Store your appliance indoors in a cool, dry area out of the reach of children.
- o. Keep your work area well lit.
- p. Let the system cool completely before putting away.
- q. Keep out of the reach of children.
- r. Burns could occur from touching hot metal, hot water or steam. Use care when you turn a steam appliance upside down, there may be hot water in the reservoir.

## SAVE THESE INSTRUCTIONS

This manual covers model numbers: R-GS300

<b>Quick Start Guide</b>	<b>4</b>
<b>Assembly</b>	<b>6</b>
<b>Using your Garment Steamer</b>	<b>8</b>
<b>Maintenance</b>	<b>10</b>
<b>Troubleshooting Guide</b>	<b>10</b>
<b>Warranty and Registration</b>	<b>11</b>

Thank you  
for purchasing  
the Shark®  
3 in 1 Fabric  
Steamer



### TECHNICAL SPECIFICATIONS

Voltage: 120V., 60Hz.

Power: 1200 Watts

Water Capacity: 1150 ml (38.5 oz.)

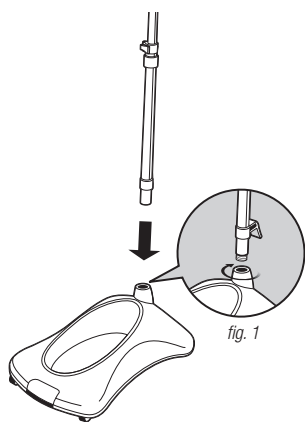


fig. 1

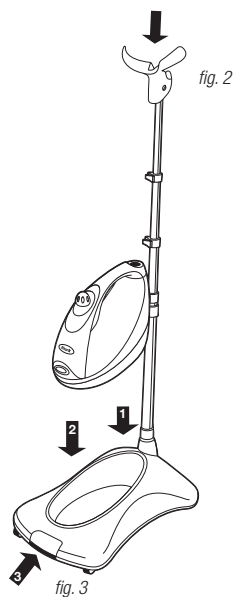


fig. 2

fig. 3

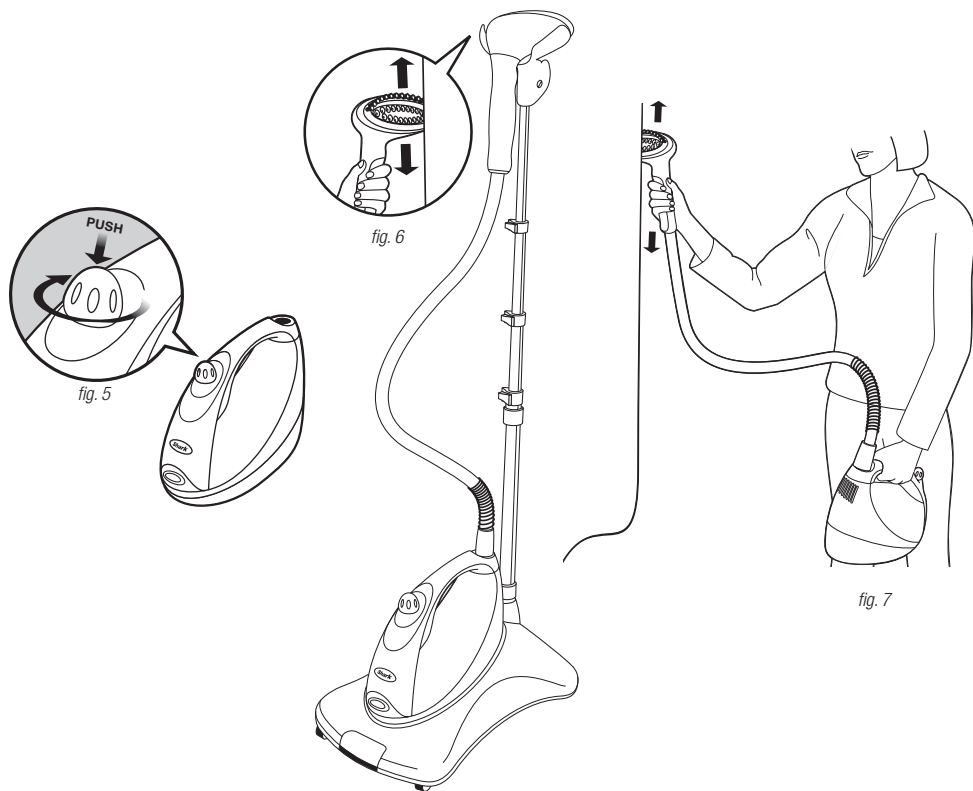
fig. 4

**ASSEMBLY**

- 1** Set the base on the floor and insert the telescoping pole, align the groove of the pole with the arrow on the base. Turn the pole connector clockwise to secure. **(fig. 1)**
- 2** Attach the steam nozzle cradle to the telescoping pole. The garment hook should face away from the front of the base. **(fig. 2)**
- 3** Pull the release button (3) on the base towards you. (2) Holding the unit at a slight angle align the slot on the front of the unit with the base rib and insert it into the base. (1) Then push down to engage the latch. Then push the release button in to lock it in place. **(fig. 3)**
- 4** Align the notch on the inside of the hose connector to the steam unit and turn the connector clockwise. Hang the steam nozzle on the steam nozzle cradle. **(fig. 4)**

**!** **NOTE:** The hose will remain stiff until heated.

- 5** Adjust the telescoping pole to the desired height.



## FILLING THE WATER TANK

- 1 Make sure the power switch is OFF "0" then unplug the unit from the power outlet.
- 2 Remove the water tank cap and using a cup fill the water tank to the max fill line. (fig. 5)
- 3 Replace the cap on the filling inlet. Push the cap down and turn clockwise making sure the arrows are aligned.

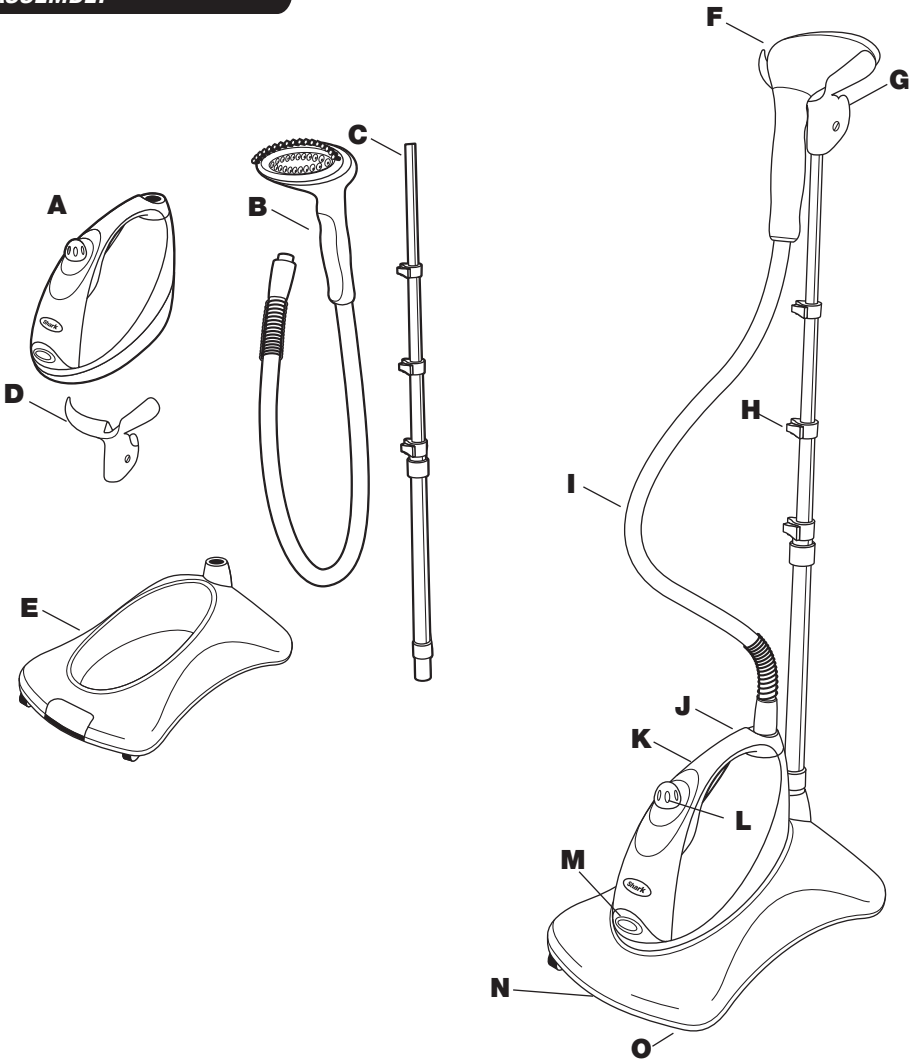
## USING THE STEAMER

### Stand Mode

- 1 Make sure the steam bonnet is in place during all usage.
- 2 Hang the garment on the garment hook and begin steaming in an up and down motion. (fig. 6)

### Portable Mode

- 1 Remove the steam unit from the base, pull the release button towards you and lift the steam unit off.
- 2 Hold the steam unit at waist level in one hand or place on a table. (fig. 7)
- 3 Steam the fabric in an up and down motion.

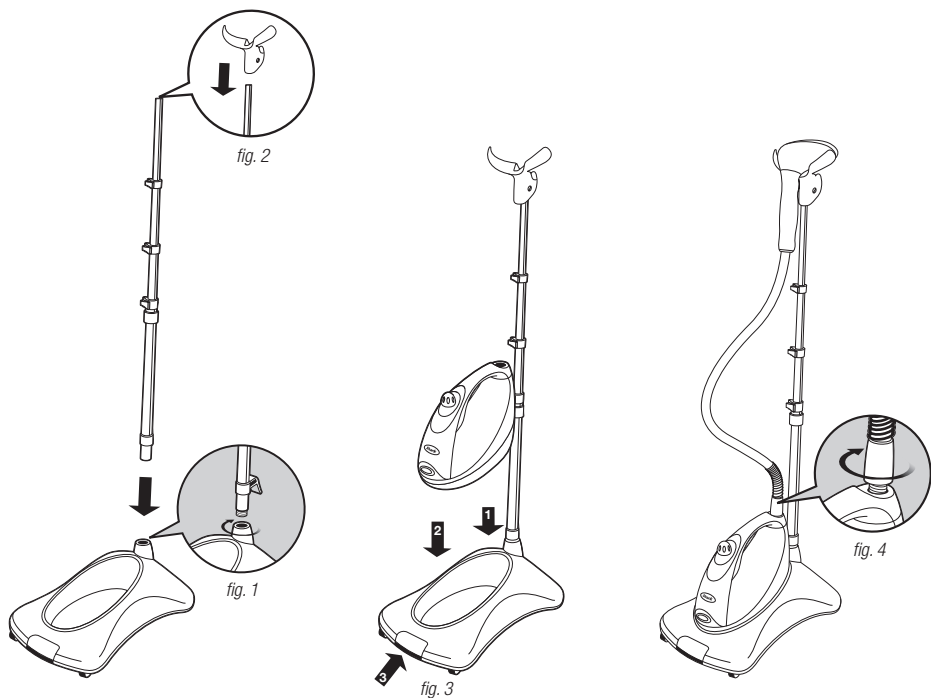


**GARMENT STEAMER COMPONENTS**

- A** Unit / Garment Steamer
- B** Steam hose/steam nozzle with steam bonnet and bristle brush frame assembled. (Bonnet and frame are removable)
- C** Telescoping Garment Pole
- D** Steam Nozzle Cradle with Garment Hook
- E** Unit Base

**YOUR GARMENT STEAMER FEATURES**

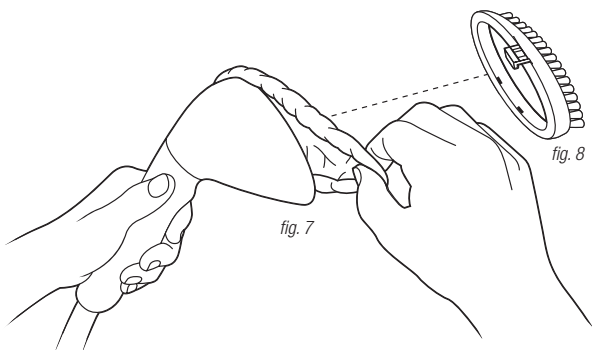
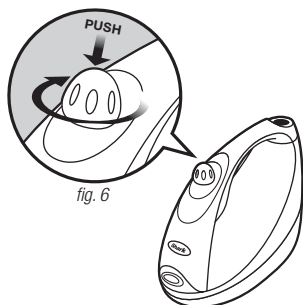
- F** Steam Nozzle
- G** Garment Hook
- H** Telescoping Garment Pole Adjustment Clips
- I** Steam Hose with fabric cover
- J** Hose Connection
- K** Carrying Handle
- L** Water Tank Cap
- M** Power Switch
- N** Base Release Button
- O** Wheels



## ASSEMBLY

- 1** Remove all packaging from the appliance. Do not plug in or turn on until assembly is complete.
- 2** Set the base on the floor and insert the telescoping pole, align the groove of the pole with the arrow on the base. Turn the pole connector clockwise to secure. (fig. 1)
- 3** Attach the steam nozzle cradle to the top of the telescoping pole and gently press down on the cradle. The garment hook should face away from the front of the base. (fig. 2)
- 4** Pull the release button (3) on the base towards you. (2) Holding the unit at a slight angle align the slot on the front of the unit with the base rib and insert it into the base. (1) Then push down to engage the latch. Then push the release button in to lock it in place. (fig. 3)
- 5** Align the notch on the inside of the hose connector to the steam unit and turn the connector clockwise to secure the hose to the steamer. (fig. 4)
- 6** Hang the steam nozzle on the steam nozzle cradle.
- 7** Adjust the telescoping pole to the desired height by unlocking the three latches one by one. Extend the pole to the appropriate height, then lock the latch back in place to secure.

**⚠ NOTE:** The hose will remain stiff until heated.



### FILLING THE WATER TANK

- 1 Make sure the power switch is OFF "0" then unplug the unit from the power outlet.
- 2 Unscrew the water cap from the inlet, the cap is tethered to the water tank and can not be completely removed. (fig. 6)
- 3 Using a cup fill the water tank to the max fill line.
- 4 Replace the cap on the filling inlet. Push the cap down and turn clockwise to lock making sure the arrows align.

**!** **IMPORTANT:** The water cap must be locked into place securely to allow proper flow of water. Once turned on, steam will not emit if the water cap is not secure.

**!** **WARNING:** Do not fill the water tank when the unit is plugged in to an electrical outlet.

**!** **WARNING:** The steam is hot! Be careful not to touch the steam nozzle when the unit is turned on or has been in use.

### STEAM BONNET

- 1 The steam bonnet protects fabrics from water marks and filters impurities from tap water. Attach the left side of the bonnet over the nozzle and stretch the bonnet across the nozzle securing the right side of the bonnet. (fig. 7)
- 2 To remove the bonnet, pull the purple tab from the edge of the bonnet and pull off.

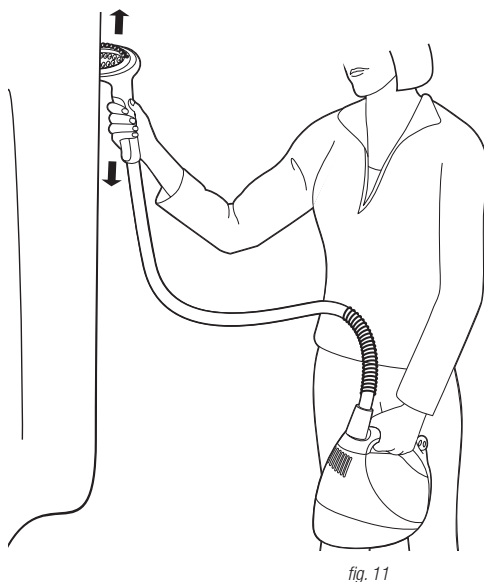
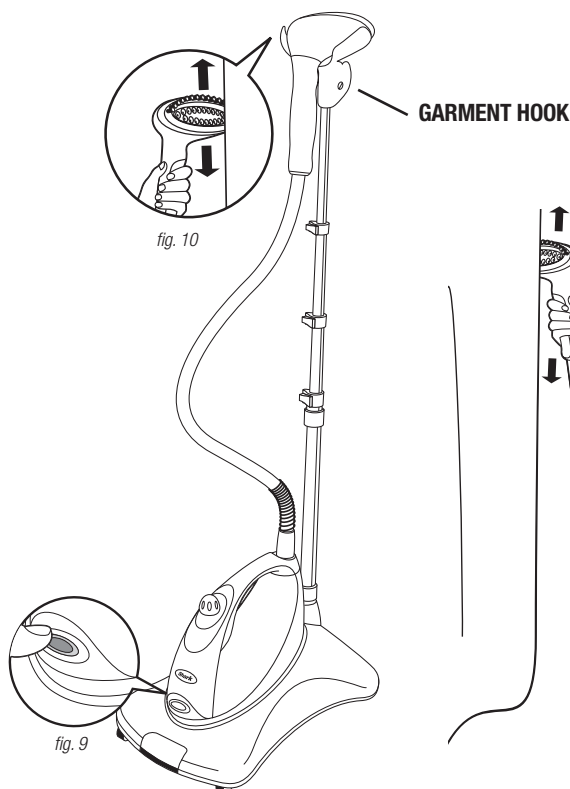
**!** **IMPORTANT:** The bonnet should be in place at all times.

**!** **WARNING:** The bonnet should never be removed during use or until the unit has cooled.

### BRISTLE FRAME

- 1 The bristle brush frame provides deep steam penetration for heavy weight fabrics (denim, canvas, cotton, etc.). It should be attached over the steam bonnet.
- 2 The bristles of the frame should be on top of the steam nozzle. Attach the two tabs on the bottom of the frame to the nozzle, then lock into place using the upper tab. (fig. 8)





### STAND STEAMING

- 1 Plug the steamer into an electrical outlet and turn the On/Off Switch to the "I" position, a blue LED light will illuminate. (fig. 9)
- 2 The steam will start emitting after 1 minute.
- 3 Hang your desired garment on the garment hook. Begin steaming the garment in an up and down motion pressing the steam nozzle on the fabric. (fig. 10)

**CAUTION:** Steam hose and metal spring can become hot during use. Never hold the hose while in use. When steaming garments, hold it always by the steam nozzle.

### PORTABLE/TABLETOP STEAMING

- 1 Use the steamer in portable or tabletop mode to freshen fabrics all around your home.
- WARNING:** Do not use on leather, suede, or leather like materials.
- 2 Remove the steam unit from the base, by pulling the release button towards you (see assembly section for more detail p. 6)
- 3 Plug the steamer into an electrical outlet and turn the unit on.
- 4 Hold the unit at waist level in one hand or place on a table. (fig. 11)

- 5 Begin steaming the fabric, upholstery or garment in an up and down motion pressing the steam nozzle on the fabric.

**IMPORTANT:** Make sure to hold the water tank level to the floor. The steam hose should be fully extended for best steam results and to avoid gurgling.

**WARNING:** The steam hose and metal spring become hot during usage.

## MAINTENANCE

### CLEANING & STORING

- 1 Turn the steamer off “0” and unplug from the electrical outlet.

Let the steamer cool for 30 minutes and empty the water from the tank.

- 2 Hang the steam nozzle on the cradle.

- 3 Collapse the telescoping pole for compact storage. Wipe the exterior of the steamer with a damp cloth and wipe dry if needed.

- 4 Store the steamer in a cool dry place.
- 5 We recommend to remove the steam hose from the steam unit and turn the water tank upside down over the sink to empty any excess water once a week. This will prolong the life of the garment steamer.

## TROUBLESHOOTING GUIDE & REPLACEMENT PARTS

### PROBLEM

### SUGGESTED SOLUTION

**There is no steam.**

- 1 Make sure the unit is plugged in and turned on.
- 2 The water tank might be empty, add water.
- 3 The water cap is not fully pushed in, press the cap down and turn clockwise to secure tightly making sure the arrows are aligned.

**The nozzle leaves water drops on the garment.**

- 1 Make sure the steam bonnet is attached to the nozzle.
- 2 The steam bonnet could be too wet, remove the bonnet and let it dry before reusing.
- 3 The steam hose is bent, straighten the hose to eliminate condensation build up.

**Gurgling/Inconsistent Steam Flow**

- 1 The hose may be bent trapping steam or condensation. Simply straighten the hose to eliminate condensation build up.
- 2 In portable usage the unit must be level to the floor with the hose extended to generate continuous steam.

**Unit won't turn on.**

- 1 Make sure the unit is plugged in and turned into the “I” position.

### REPLACEMENT PARTS

- A** 100SDL Bristle Brush Frame  
**B** XPD300 Steam Bonnet

To order any of the above replacement parts, go to [www.sharkclean.com](http://www.sharkclean.com) or call 1-800-798-7398.